

PROTECT



Simlog

Integrated logistic support

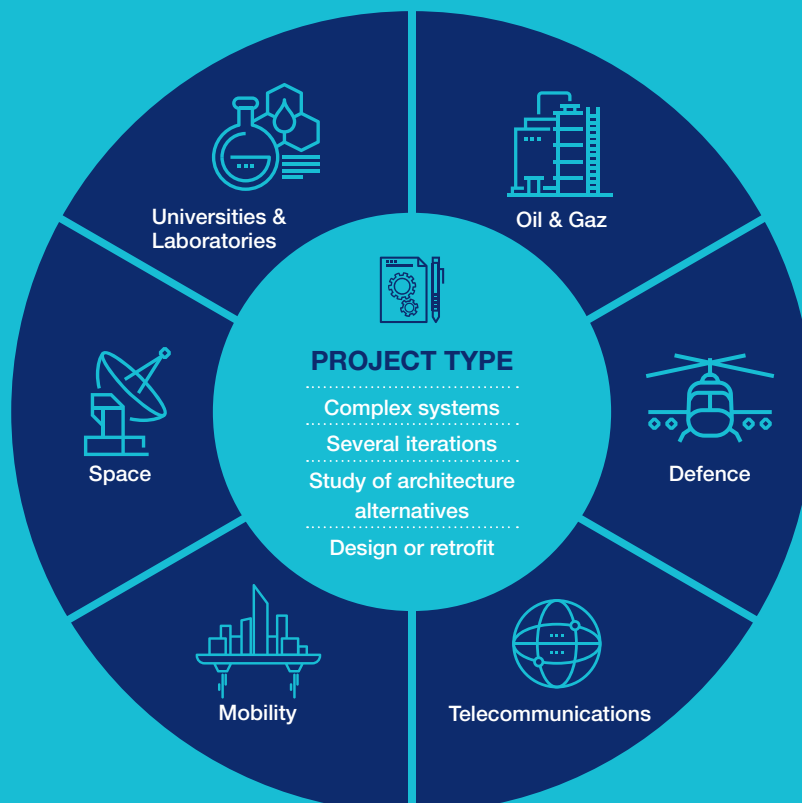
Optimising maintenance through costs

From the definition of physical and dysfunctional components, the geographical tree structure of the support, the reliability and maintainability data, as well as the maintenance policy, SIMLOG helps the logistician to set up the logistic support elements for one or more repairable systems or systems of systems.

SIMLOG is a software which allows the simulation, estimation and optimisation of a support system shared by several operational systems. It also enables:

- Computing logistical availability and time indicators, based on sites, articles and subsystems
- Optimising the allocation of spare stocks, based on various criteria such as operational availability, probability of not running out of stock, with targets on articles, subsystems, systems or combination of sites
- Specifying in a customised way global cost of ownership models, describing all the costs generated in the life of the supported systems and perform sensitivity analyses to compare different alternatives.

Main users & application fields



Manage ILS through cost availability and quality

Airbus Protect is a new entity created in July 2022 bringing together more than 35 years of experience. Our aim is to offer end-to-end advisory, consulting services, training programmes and software solutions.

Pairing expertise built through large-scale projects with the latest insights from our own research programmes, we support customers, partners and their ecosystem in various industrial domains. Our business is to support Transportation, Mobility, Energy and Defence, industries, in safety, cybersecurity & sustainability topics.

Our aim is to find the right solution, based on agile innovation methods. This approach is supported by software solutions with a high level of scientific and technological integration.

Our solution has been recognised for more than 20 years by our customers for its user friendly experience and its high quality of support and services.

Simlog optimises and digitalises your ILS process through model iterations to better manage operational availability and system cost along its lifecycle.

Main features

- >> List of equipment
- >> Reliability diagram
- >> Define support architecture
- >> Define maintenance tasks
- >> Compute operational availability
- >> Optimise spare part
- >> Compute lifecycle cost
- >> Optimise maintenance policies

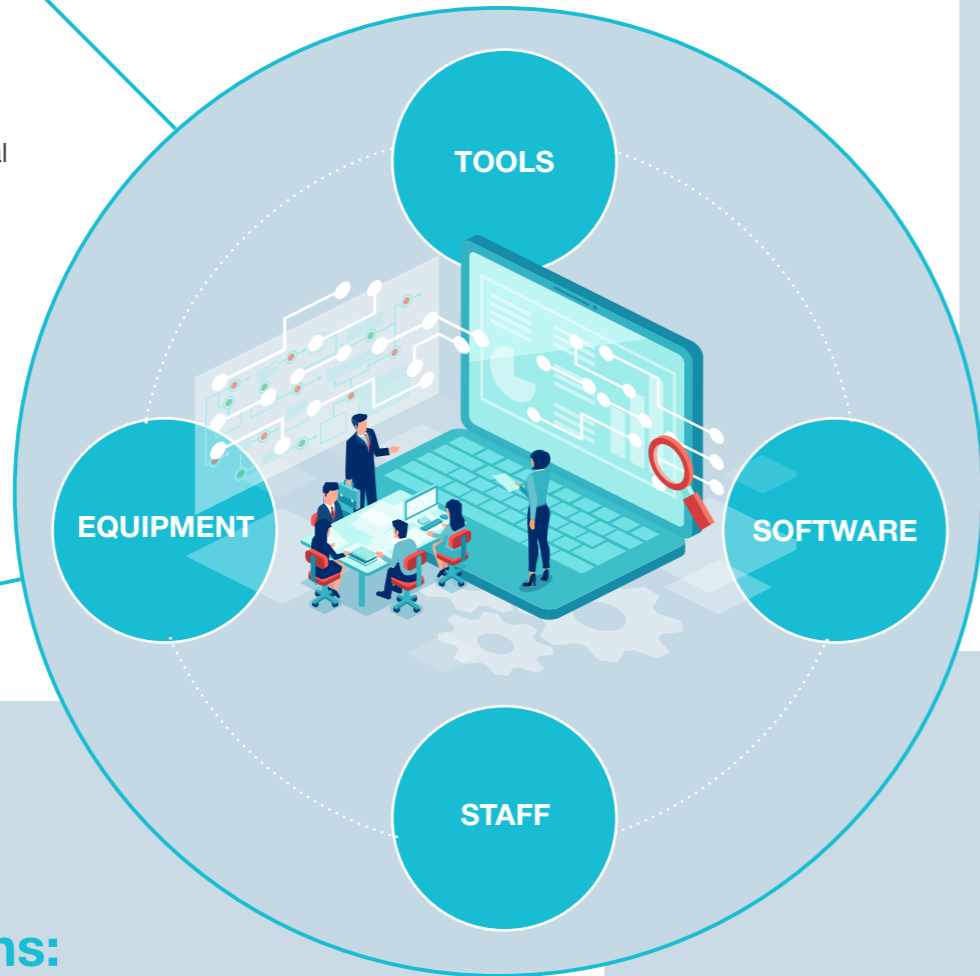
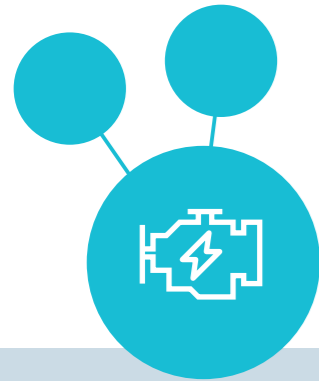


System

A system is an interacting organised group of hardware, software, human components in order to perform a given mission or group of specific functions.

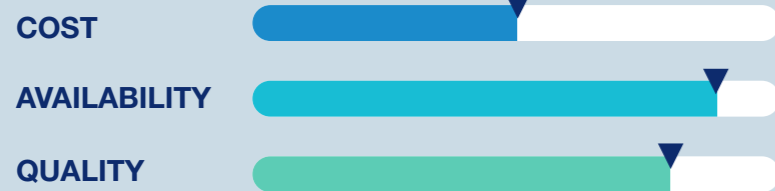
Subsystem

A system is composed of several sub-subsystems, themselves decomposed.... up to the basic equipment

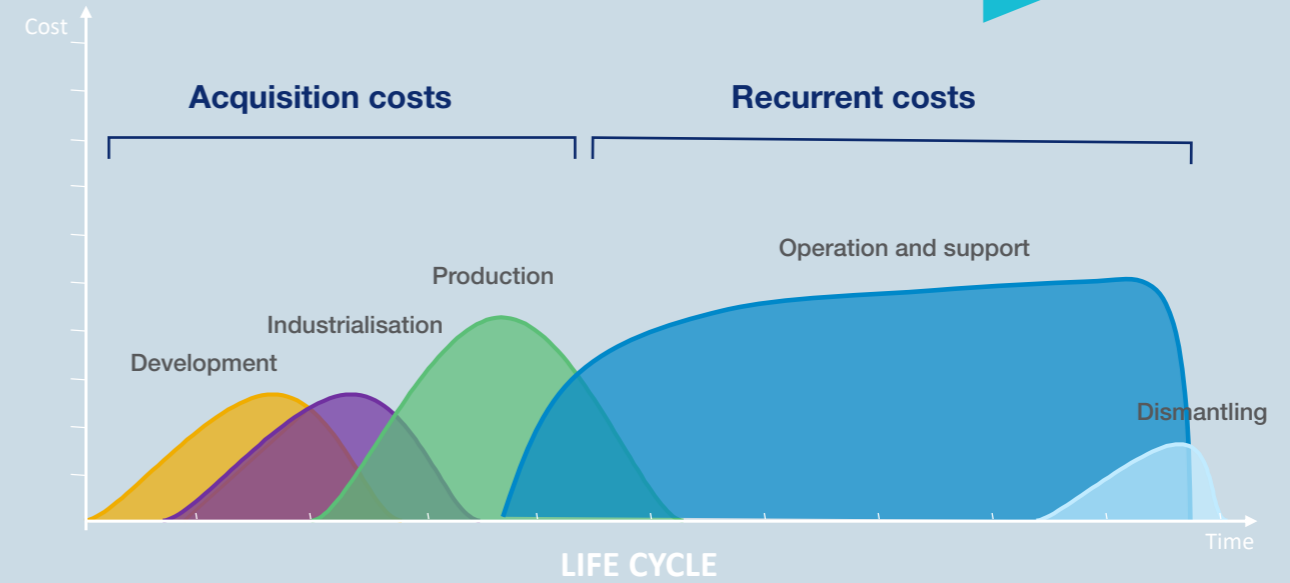


System considerations: objectives

To reduce life support costs and delays of unavailability, while ensuring the system's performances.



Life cycle cost



Costs iceberg

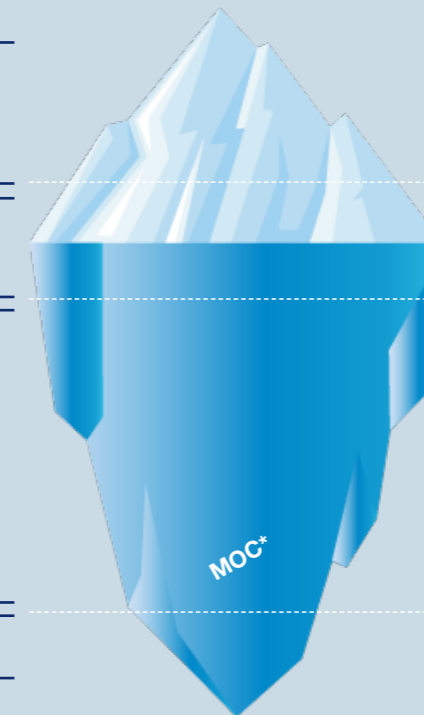
Complex systems lifecycle cost should be considered from Design to Dismantling

Acquisition
20 à 30%

Operation
10 à 20%

Support
50 à 60%

Dismantling
5 à 10%



- Buying
- Personnel
- Expendables
- Fluids
- Documentation and update
- Initial training
- Facilities
- Tools and test bench
- Spares and supply
- Maintenance tools and test bench
- Repairing, Tests, Modifications
- Stocks, Stocks list update
- Software evolution
- Maintenance of facilities...
- Recycling
- Destruction secret
- Disposal

*Maintain in Operational Condition



GET IN TOUCH TO DISCOVER
HOW WE CAN SUPPORT YOU:

protect@airbus.com
www.protect.airbus.com

GERMANY

Airbus Protect GmbH
Willy-Messerschmitt-Str. 1
82024 Taufkirchen
Germany

UNITED KINGDOM

Airbus Protect Limited
Quadrant House, Celtic Springs,
Coedkernew, Newport, NP10 8FZ
United Kingdom

FRANCE

Airbus Protect SAS
36, rue Raymond Grimaud,
31700 Blagnac,
France

AIRBUS

Airbus Protect, 31700 Blagnac, France
© AIRBUS Protect - All rights reserved. Airbus,
its logo and the product names are registered
trademarks. This document is noncontractual.
Subject to change without notice.

_enabling a trusted future